

Data Sheet

Vanguard 6840 Router Series

Highlights

A high performance, mid-range gateway router series with advanced security, optimized for high speed network services

Enables routing of IP, SNA & other legacy protocols, voice and video in a single device

Investment protection of serial applications Supports IP, VPN, MPLS, Frame Relay, ATM and Leased Line network services

Upgrade path to broadband services such as DSL, cable, and wireless

Perfect low-cost solution for larger branch offices, where high bandwidth requirements, Ethernet support, serial port support, and increased performance are essential Advanced architecture easily supports

CPU intensive applications such as: advanced QoS, high speed multimedia traffic processing, and enhanced security via hardware-accelerated encryption and VPNs

Digital voice support with 60 channels with R2D and ISDN

Vanguard 6840 Multimedia Router Series for Medium to Large Office

The Vanguard 6840 Multimedia Router Series provides a high performance, cost-effective networking solution for medium to large enterprise branches. It is a gateway router that can route: IP traffic, serial protocols, voice and IP-video over either IP, VPN, MPLS, Frame Relay or ATM networks. It features enhanced branch security through an integrated firewall, and offers unique IP-migration functions that enable seamless convergence to an IP-architecture without 'ripping and replacing' non-IP applications, phones or peripheral devices.

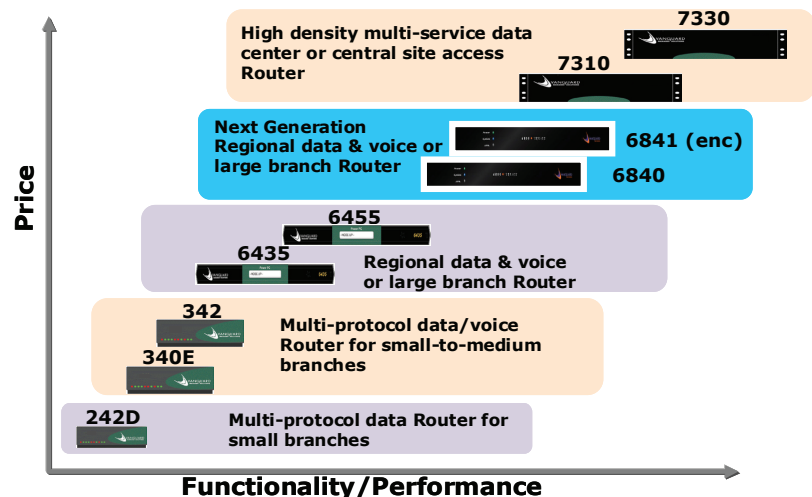
As more and more enterprises migrate to IP-architectures and IP-based services, network performance, security, and quality of service (QoS) are areas of major concern. Enterprises are looking for innovative infrastructure solutions that will enable them to grow while protecting their existing investments. The Vanguard 6840 Router Series provides a leading yet pragmatic networking solution both from a Value and Total Cost of Ownership perspective.

The Vanguard 6840 Multimedia Router Series consists of the 6840 model and the 6841 model, which is the **6840** product enhanced with onboard hardware-accelerated encryption. The Vanguard **6840** Series supports:

- Secure Internet, intranet, and extranet access via IP VPNs with integrated Firewall
- An industry leading set of serial protocols such as IBM SNA & bisync, and their seamless integration over secure IP networks and Frame Relay
- Broadband DSL, cable, and wireless connectivity
- Advanced QoS support for mission-critical enterprise applications
- Vonberged voice, video and data

The 6840 and 6841 models are positioned as the newest members of the Vanguard router family:

Vanguard® Product Portfolio



The Vanguard 6840 Series is a desktop or rack mount unit. It includes:

- two auto-sensing 10/100BaseT Fast Ethernet ports
- two software-selectable, high-speed universal serial ports.

The base unit can be expanded by any four daughter card combinations, including FXS/FXO, ISDN BRI, T1/E1 and Serial, which can be configured in any fashion or quantity desired by the customer. Vanguard customers are assured of investment protection with respect to their existing serial requirements as well as the use of existing hardware daughter cards currently supported on the 3xx/64xx router family.

Target Applications

The Vanguard 6840 Series is ideal for a wide variety of applications. The diagram illustrates the many multimedia connections and WAN transports supported by this versatile router series.

The major applications envisioned for the 6840 Series are the following scenarios:

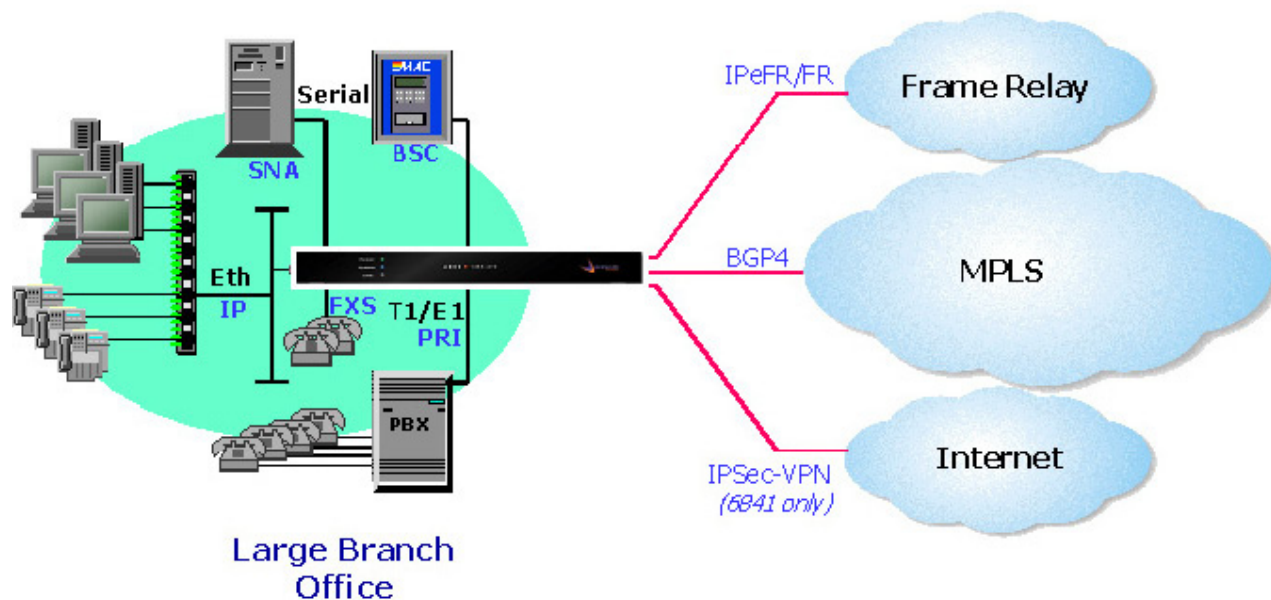
1. Branch Offices with Site-to-site VPN tunnels, Encryption requirements & QoS demands for IP traffic.
2. Large Branch Offices with VPN tunnels, Encryption requirements, & QoS demands for IP traffic & multiprotocol voice, as well as legacy data
3. Central site VPN concentrator for smaller size networks (20-50 sites) and voice concentrator.
4. Bank Private Network Serial Applications

True Multiservice/Multiprotocol Support

Any Protocol
Any Device
Any Applicant

————— To —————>

Any Service



Product Specifications - Vanguard Application Ware

Vanguard Applications Ware offers modular software solutions that extend across nearly all models of the Vanguard family of products. The following software features are offered on the Vanguard 6840 Series Multimedia routers:

IP Routing & Protocols

- IPv4, RIP1/RIP2, OSPF, BGP4, DVMRP, PIM-SM (IP Multicast)
- BGP Communities (RFC 1997 & 1998)
- Policy Based Routing
- BGP Multipath
- Inter-VLAN routing (802.1Q)
- Classless Inter-Domain Routing (CIDR)
- Network Address Translation (NAT)
- Port Address Translation
- Real-Time Transport Protocol (RTP)
- Header Compression (RFC 2508)
- Virtual Router Redundancy Protocol (VRRP)
- OnNet Proxy (Router Standby Protocol)
- Multiple IP Addresses per Physical Interface
- ICMP Router Discovery (RFC 1256)
- DHCP Client
- Multi-Link PPP
- PPPoE (RFC 2516)
- PPPoA (RFC 1483)

User Authentication

- RADIUS
- PAP/CHAP

Packet Voice

- Digital Voice (T1/E1/PRI)
- VoIP and Voice over Frame Relay
- Voice compression using G.711, G.723.1, G.729a, G.729b
- Analog PBX and PSTN connections
- H.323 v2 Voice over IP gateway
- Up to 16 analog voice channels
- Fax over IP (T.38) and Frame Relay
- Premium Voice Features (Caller ID, Xfer, Hold, Waiting, Forwarding, Voice Mail)
- Automatic fax/modem detection
- Voice Activity Detection (VAD)
- Silence Suppression

QoS for Optimization of Data, Voice and Video

- Bandwidth on Demand (BOD)
- Dial on Demand (DOD)
- Link Backup (V.25bis and ISDN)
- Data Connection Protection (DCP) (X.25, SDLC, LLC2)
- IP Type of Service (IP TOS)
- Priority Queuing
- Class Based Queuing (CBQ)
- Weighted Fair Queuing (WFQ)
- Weighted Random Early Discard (WRED)
- Differentiated Services (DiffServ)
- Packet Classification
- Policy Based Routing
- Fast Path Switching for Voice
- Multi-Link PPP (MLPPP)
- Generic Traffic Shaping (GTS)
- Compressed Real-Time Protocol (cRTP)
- MLPP Link Fragmentation and inter-leaving Segmentation (RFC 1990 § 2686)
- Support 802.1P for VLANs

Virtual LAN (VLAN)

- Support 802.1Q & 802.1P

IP Virtual Private Networks (VPN)

- VPN Tunneling: IPSec (IP traffic), GRE (non-IP traffic)
- IPSec Authentication Header (AH) and IPSec Encapsulating Security Payload (ESP)
- IPSec Encryption: IPSec DES (56 bit), 3DES (128 bit) and 3DES (168 bit)
- Advanced Encryption Standard (AES): 128, 192, and 256 bit key length
- Device Authentication and Key Management: Public Key Infrastructure (PKI) and X.509v3 Digital Certificates
- Dead Peer Detection
- Message Authentication through Complex Hashing Algorithms (MD5/SHA-1)
- Dynamic IP Address (Dynamic VPN Tunnels)

Firewall

- Firewall Stateful Packet Filter

Other Bridging/Routing Protocols

- IPX/Novell IPX WAN, Appletalk
- Transparent Bridging (Spanning Tree IEEE 802.1d)
- SLIP
- SoTCP
- Async and Sync PPP Network Interface

Frame Relay

- Frame Relay DTE with Traffic Fairness
- Frame Relay Switching (DCE)
- Frame Relay Annex G (ANSI T1.617)
- Frame Relay Annex A (ITU-T Q.933)
- Frame Relay RFC 1490 (IP/IPX/Appletalk)
- Local Management Interface (LMI)
- End-to-End Delay
- Frame Relay Auto Learn
- Frame Relay Traffic Shaping (FRTS)
- FRF 8 & FRF 12

ATM (future)

- CBR, VBR-rt, VBR-nt, UBR, AAL-5

ISDN

- U interface: ANSI T1.601 1992 (2B1Q)
- S/T: ITU I.430
- LAPD: ITU Q.921 Compliant
- Integral X.31 Support
- Q.931 Dial Support
- Switches (NI1, 5ESS, DMS-100, ETSI, NTT, Euro Numeris)
- Permanent B for German Monopol Support
- Permanent B for Japan High Speed Digital
- D Channel Packet

X.25

- X.25 DTE
- X.25 Switching (DCE)
- RFC 877/1356 (IP)
- X.25 Translation, CUG, NUI Support
- X.25 on "D" Channel Support

IBM Networking

- SNA/SDLC for Serial Connections
- BSC 2780, 3780, 3270 (HPAD, TPAD)
- QLLC X.25 (IBM NPSI) Point-to-Point or Multi-drop (up to 64 PUs)
- Conversion SDLC to RFC 1490
- Conversion SDLC to LLC2
- Conversion LLC2 to RFC 1490
- Conversion BSC 3780 to SNA
- Conversion BSC 3270 to SNA
- AS/400 5494 Communications Server
- TN3270 Remote Server

Serial

- Transparent COP (TCOP)
- Transparent BOP (TBOP)
- ATPAD (Port 3 and 4 only)
- Transparent Polled Async (TPA)
- SLIP
- x.42 Lottery Protocol

System Management

- SNMP management
- Configuration Management
- OS Image Management
- Telnet
- TFTP
- CLI
- Embedded Web HTTPD
- SSH2 Server

Hardware Specification - Vanguard 6840 Series

Specifications - Hardware (Base Unit)

Desktop or rack-mount (optional 19" rack-mount kit)
 1 RS-232 management port (up to 115.2 kbps)
 1 RS-232 Auxiliary port (up to 115.2 kbps)
 2 x 10/100 BaseT auto-sensing
 2 High Speed Serial Ports (up to 2.048 Mbps software selectable support for V.24, V.35, V.36, V.11)
 MPC8270 PowerPC Processor
 1 SDRAM Module (up to 1024 MB)
 8MB of non-volatile flash
 Compact Flash (32 MB with expansion capabilities)
 Integrated H/W accelerated Encryption (6841 only)

Interfaces - Daughter Card Modules

Serial (V.24, V.35, V.36, V.11, X.21)
 56K DSU
 ISDN BRI Data – (2B+D) U interface
 ISDN BRI Data – (2B+D) S/T interface
 ISDN BRI Digital Voice – S/T interface
 Dual E&M Analog Voice
 Quad FXO Analog Voice
 Quad FXS Analog Voice
 Dual FXS Analog Voice
 Single FXS/FXO Analog Voice
 V.90 Modem
 FT1/FE1/T1/E1/PRI

Port Capacities

2 Ethernet (10/100BaseT auto-sensing)
 8 High Speed Serial
 2 RS-232 Serial
 4 56K DSU
 4 ISDN BRI
 8 E&M Voice
 16 FXS Voice
 16 FXO Voice
 4 V.90 Modem
 4 T1 / 4 E1

Physical Dimensions

Height: 1.75in
 Width: 17.5in
 Depth: 14.125in
 Weight: 10.80 lbs unloaded, 12.05lbs, fully loaded

Power Requirements

90 to 264 Vac
 47 to 63 Hz

Environmental

Operating Temperature: 32 °to 104 °F (0 °to 40 °C)
 Storage Temperature: -40 to 158 °F (-40 °to 70 °C)
 Relative Humidity: 5% to 90%, non-condensing

Regulatory Compliance

Safety Certifications: UL1950 3rd Edition, CAN/CSA C22.2 No. 950-95 3rd Edition, IEC 950 2nd Edition Amendment 1, 2, 3 & 4 (CB Scheme), EN60950
 EMC Certifications: FCC Part 15 Class A, Canadian IC Class A, CISPR 22 Class A, EN55022: 1997 Class A, EN50082-1 (EN55024)

Telecom Certifications: FCC Part 68, Industry Canada CS-03, CTR-2, CTR-4, CTR-12, CTR-13, Country Specific (contact your local sales representative).

Need more info?

Vanguard Networks offers a full range of network lifecycle services. Services may differ from country to country. Contact your local Vanguard Networks representative for details or access our web site at: www.vanguardnetworks.com.

Vanguard 6840 Series Rear Panel

